

User manual for Splash Entry Editor 2008

Download and installation

Go to https://livetiming.se/file_archive.php?cid=6713 and download the zip file Install_Splash_editor.zip. https://livetiming.se/file_archive/6713/Install_Splash_editor.zip



2022-08-07 23:54:11
Choose competition:
Nordic Open Masters Championships 2022
Choose language:
[Flags]

Choose an alternative: Home Competitions Program Results By event **Filearchive** LIVE

Filearchive

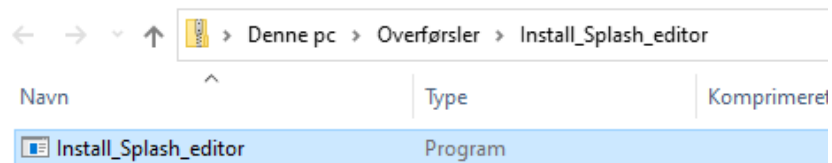
Here are the files shown that the organizer has uploaded to the competition.

FILENAMNE	DESCRIPTION	ADDED
Install_Splash_editor.zip	Install_Splash_editor	2022-08-07 23:25:21
Events_Nordic_Open_Masters_2022.lef	Eventsfile - Lef	2022-06-27 00:09:40
Invitation_Torshavn_2022_Nordic_Open_Masters.pdf	Invitation	2022-06-27 00:08:56

[RSS Feed](#) | [Kontakt](#) | [Integritetspolicy](#)
© Copyright 2013 IC Control Media & Sport

Download the zip folder to your hard disc.

Navigate to your download folder.



Double-click the EXE-file (Install_Splash_editor) for the installation procedure and follow the instructions on the screen.



Accept the license agreement.

License Agreement

Please read the following important information before continuing.



Please read the following License Agreement. You must accept the terms of this agreement before continuing with the installation.

Software License Agreement
=====

1. Object of contract
This contract concerns the rights of use of SPLASH Software, as well as adaptations and extensions.

2. Licence restrictions

2.1. Installation

I accept the agreement
 I do not accept the agreement


< Back Next > Cancel

Choose your individual program directory.

Select Destination Location

Where should Splash Entry Editor be installed?



 Setup will install Splash Entry Editor into the following folder.

To continue, click Next. If you would like to select a different folder, click Browse.

 Browse...

At least 3.5 MB of free disk space is required.


< Back Next > Cancel

Choose a Start Menu folder

Select Start Menu Folder

Where should Setup place the program's shortcuts?



 Setup will create the program's shortcuts in the following Start Menu folder.

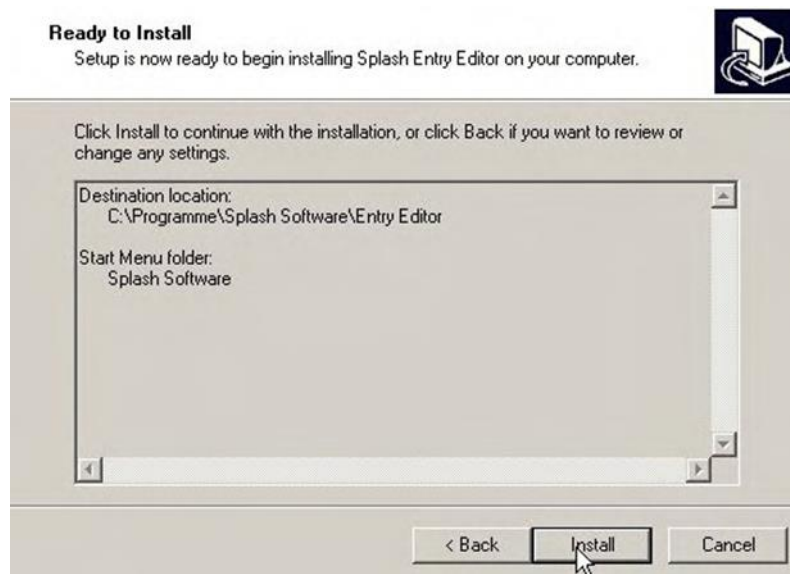
To continue, click Next. If you would like to select a different folder, click Browse.

 Browse...

Don't create a Start Menu folder

< Back Next > Cancel

Click Install and the installation will start.



Choose your preferred language



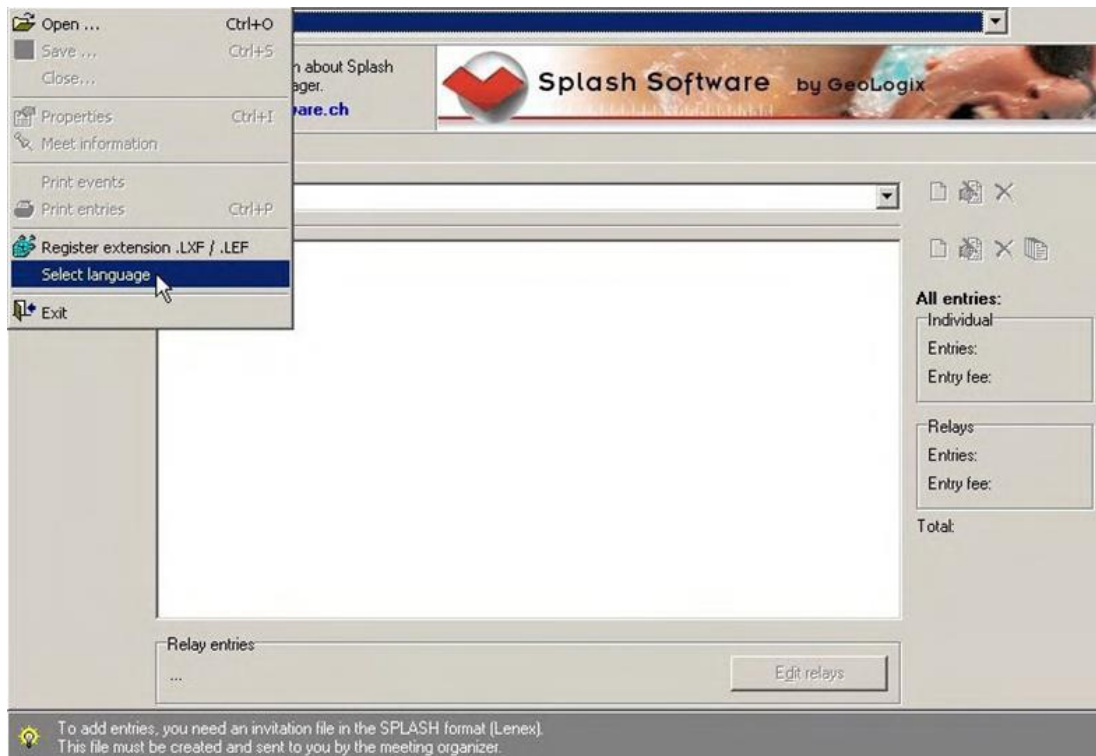
After completing the installation, the application can be launched directly.



Start screen of the editor with version information:



You can change your preferred language



How to edit a LENEX (lef) file.

Download the lef. Events file (Events_Nordic_Open_Masters_2022.lef)

Go to https://livetiming.se/file_archive.php?cid=6713

Right click on the event file (Events_Nordic_Open_Masters_2022.lef) and left click on Save link as..

FILENAMNE	DESCRIPTION	ADDED
Install_Splash_editor.zip	Install_Splash_editor	2022-08-07 23:25:21
Events_Nordic_Open_Masters_2022.lef	Eventsfile - Lef	2022-06-27 00:09:40
Invitation_Torshavn_2022_Nordic_Ope	Invitation	2022-06-27 00:08:56

Save the file on your hard disk.

You can also get the event file on the federation website <https://ssf.fo/nom2022/>

Svimjisamband Føroya

Faroe Islands Swimming Association



Nordic Open Masters 2022

The Faroe Islands Swimming Association is pleased to announce the 2022 edition of the Nordic Open Masters championships to be in Tórshavn, the Faroe Islands on 30 September and 1 October 2022.



The official invitation and Lenex (lef) file are here:

[Invitation-Torshavn-2022-Nordic-Open-Masters.pdf](#) [Download](#)

[Events_Nordic_Open_Masters_2022.lef](#) [Download](#)

And here: https://livetiming.se/file_archive.php?cid=6713

Stuðul



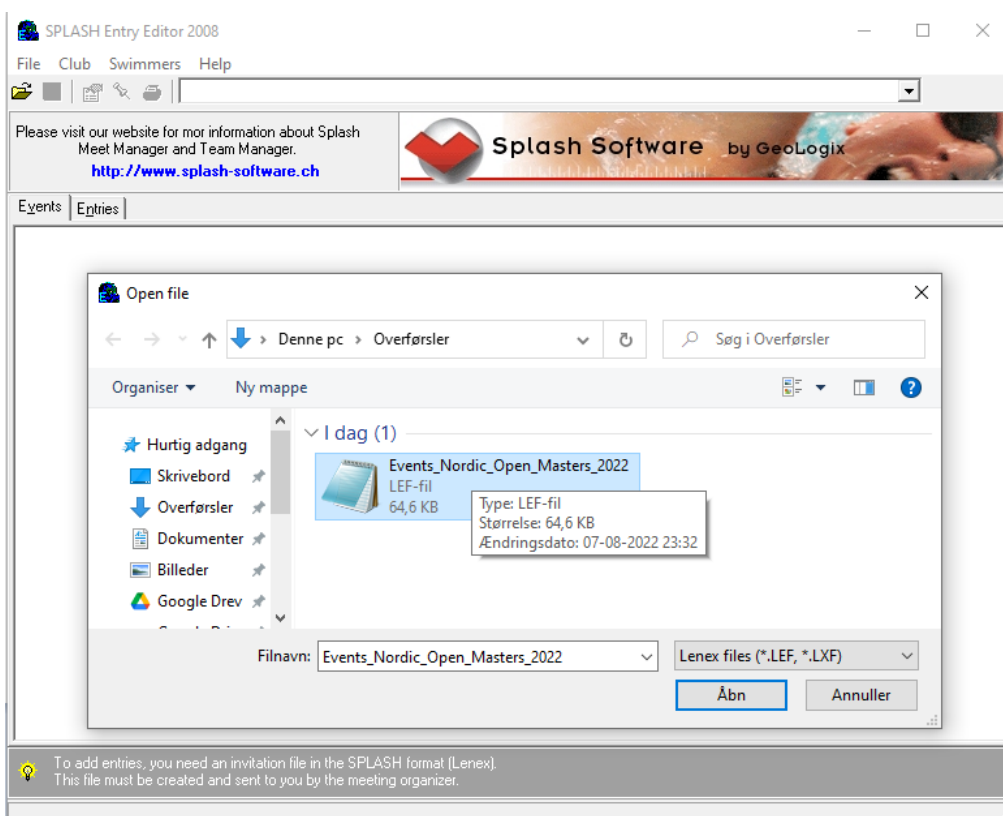
Svimjisamband Føroya
Postboks 1329
FO-110 Tórshavn
Telefon - +298 607359
ssf@ssf.fo

Banki: BankNordik 6460 - 138455
SWIFT: FIFBFO7K
IBAN: FO08460000138455
V-tal 382019 og 622032

Skrivstovutíð:
Mána- og friggjadag kl. 9.00-12.00

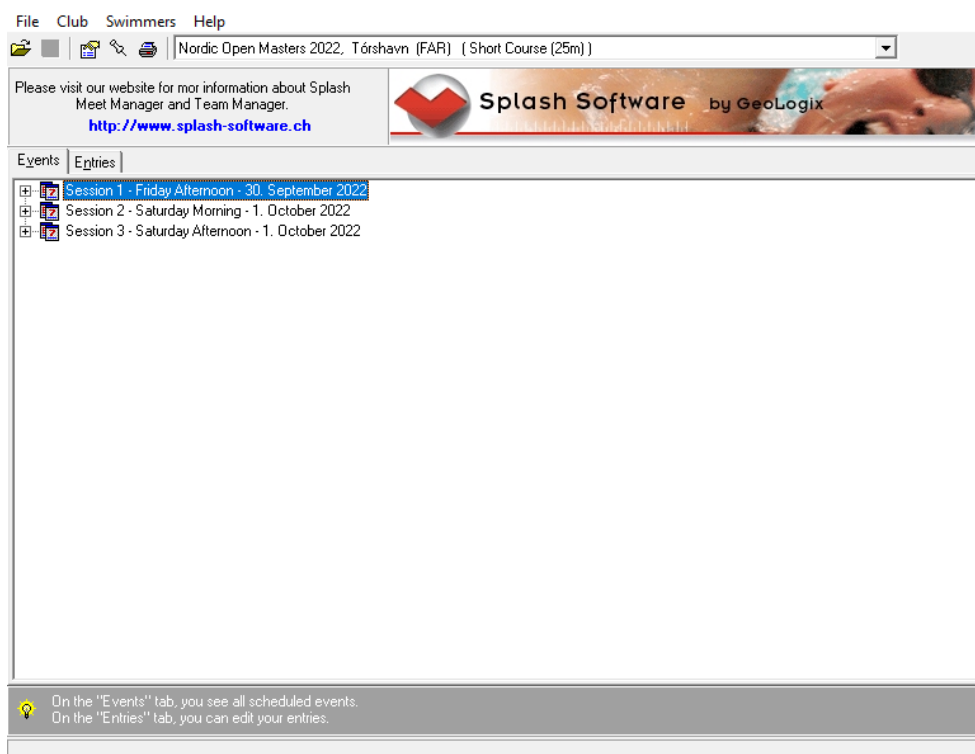
Click Download on the file Events_Nordic_Open_Masters_2022.lef. Save the file to your hard disk.

Open the LXF-file with the Entry Editor-

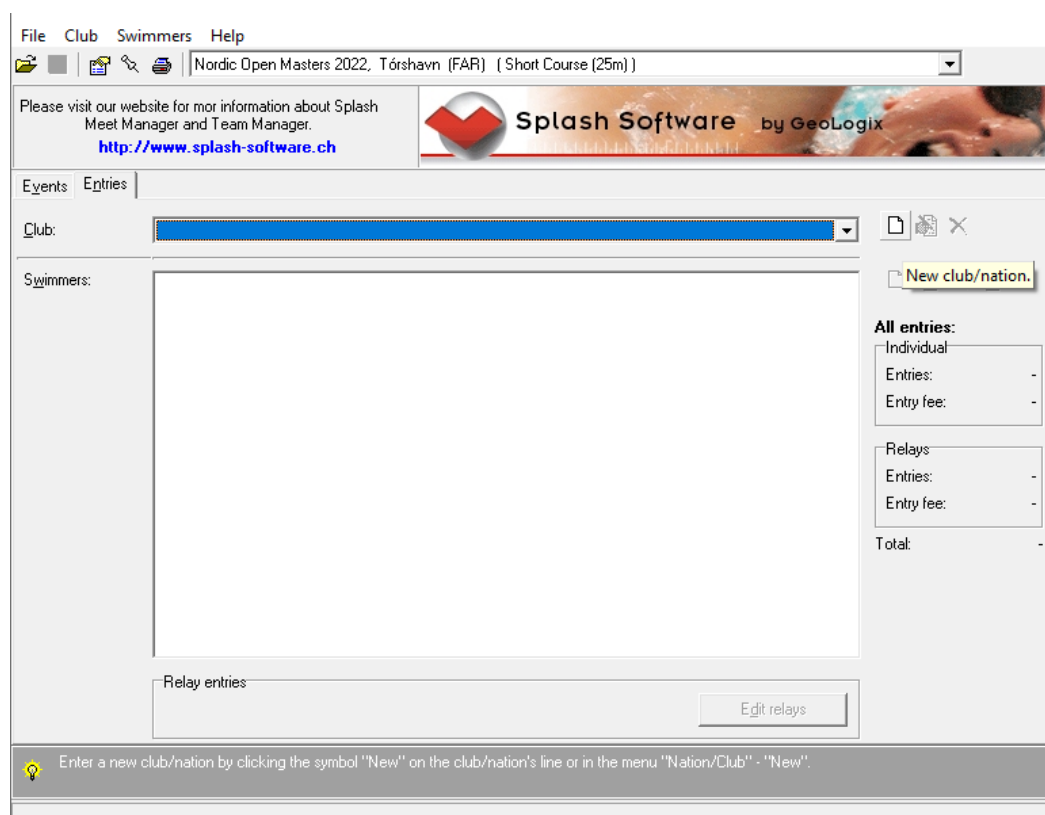


Find the folder where you downloaded the file (Events_Nordic_Open_Masters_2022.lef) select the file and press open.

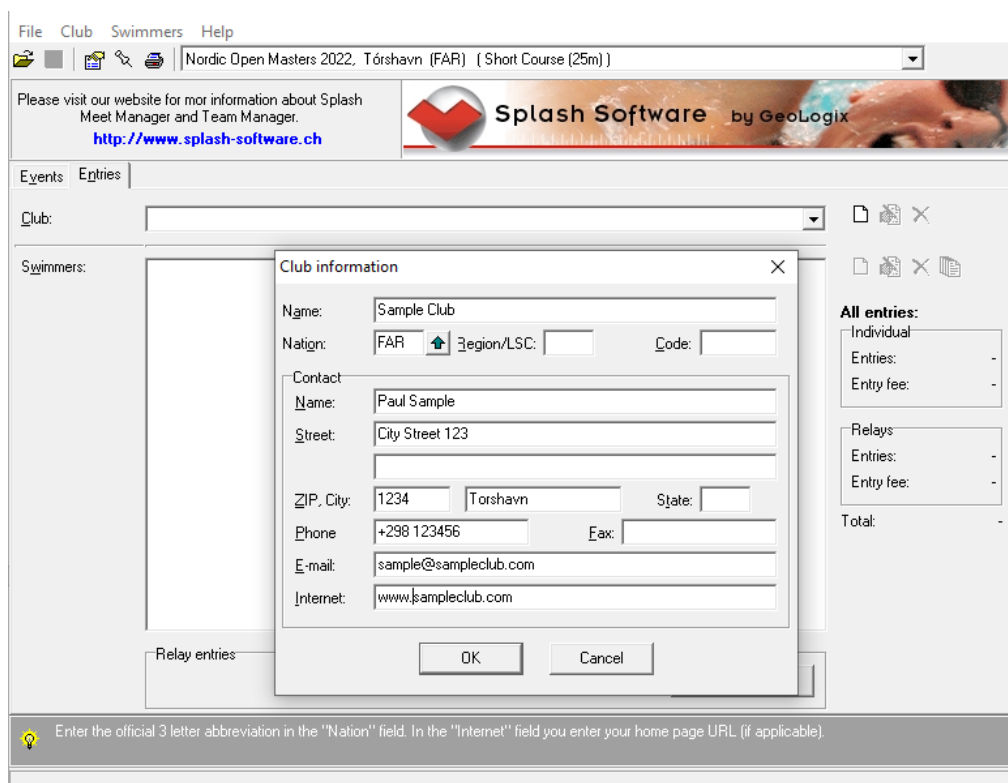
You will find two tabs ,Entries' and ,Events'. Expand the event structures by clicking the ,+'.



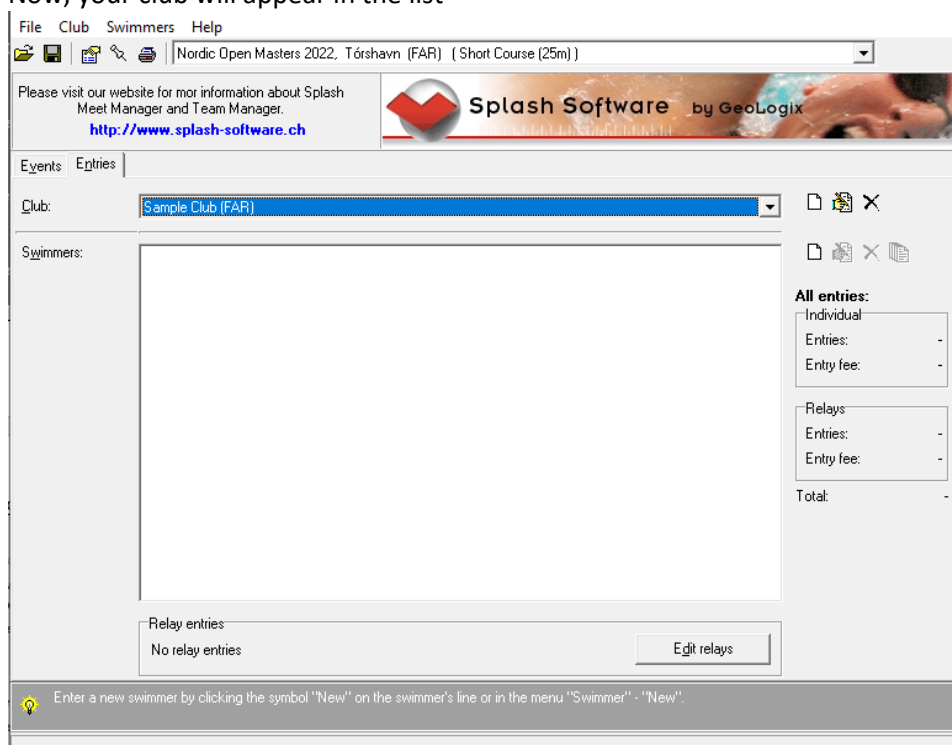
Go to ,Entries' tab to fill-out your inscription. First add a new club.



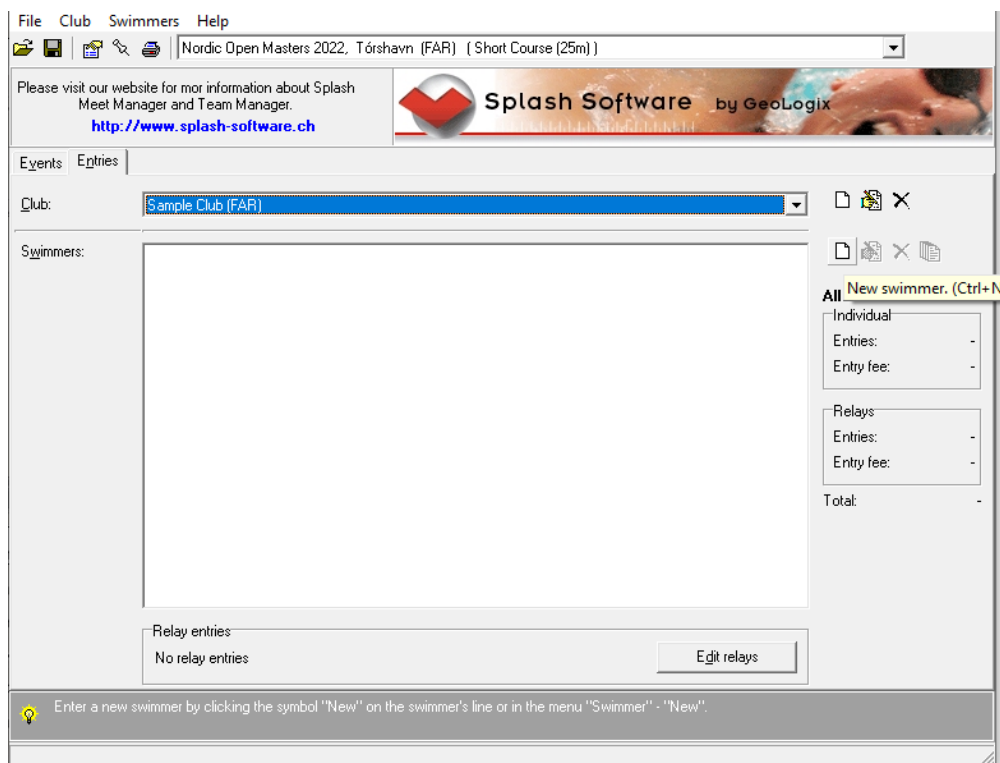
Fill in the information about your club and press OK.



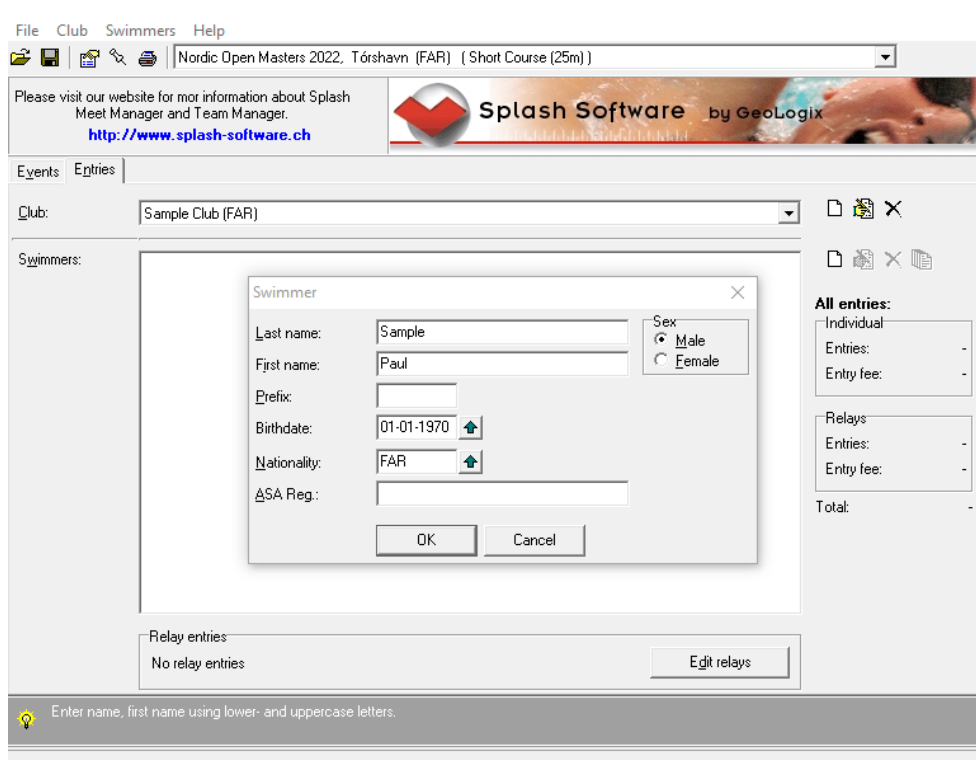
Now, your club will appear in the list



Add new swimmers by clicking on New swimmer icon or use (Ctrl+N)

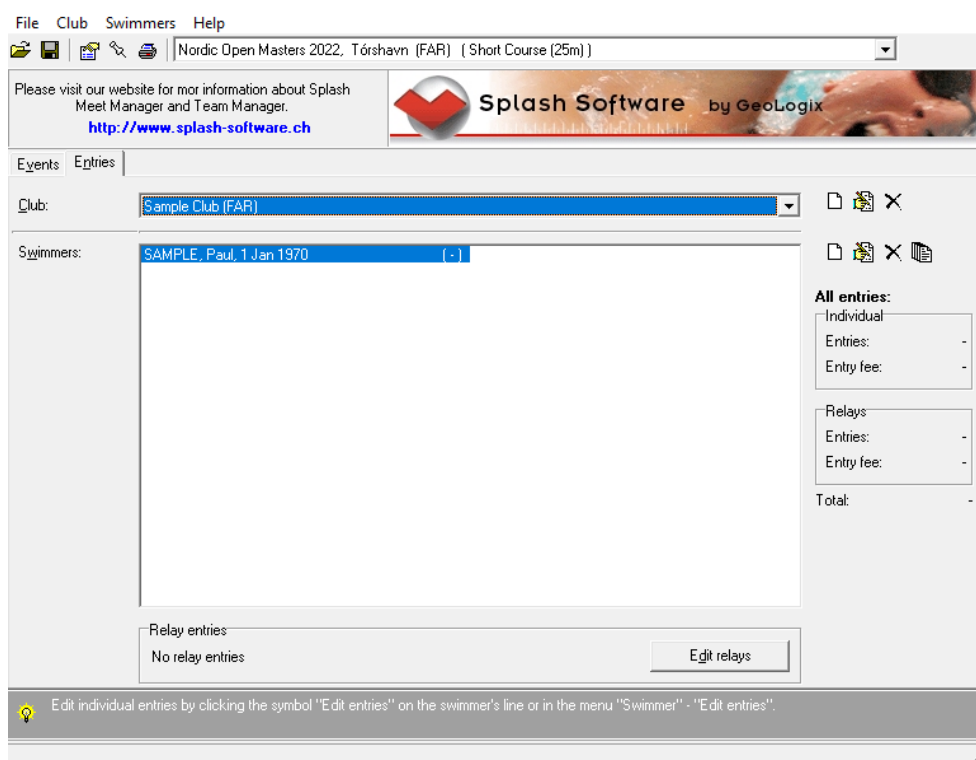


Fill in the information about the swimmer and press OK

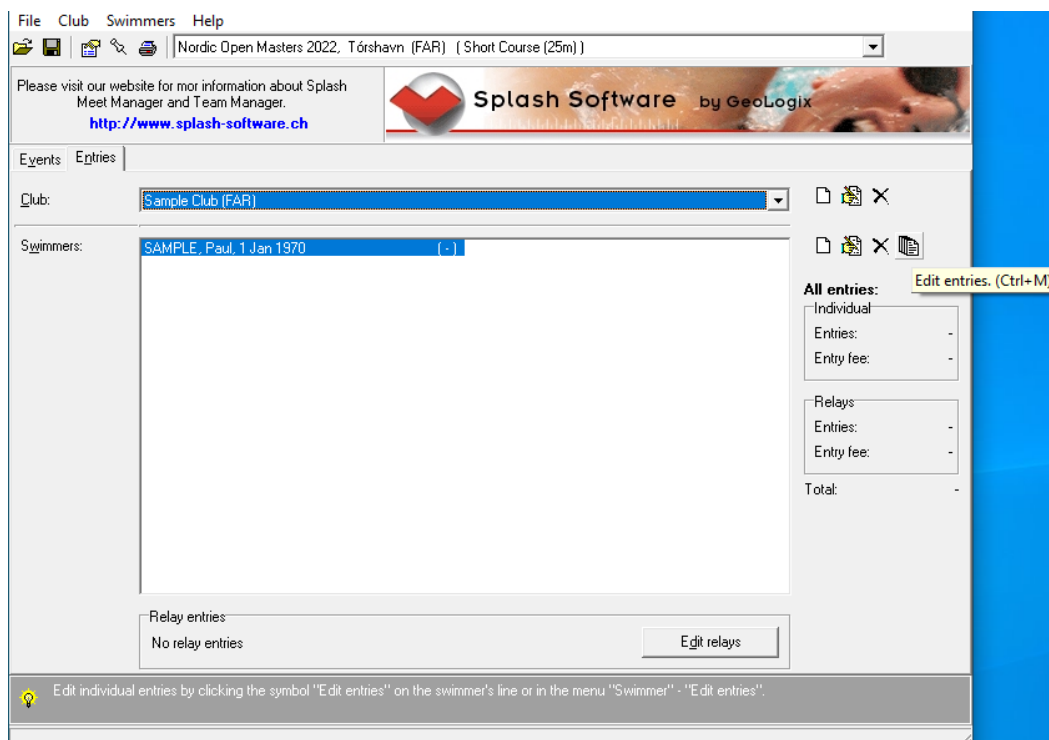


To add more swimmers, redo the process for every swimmer.

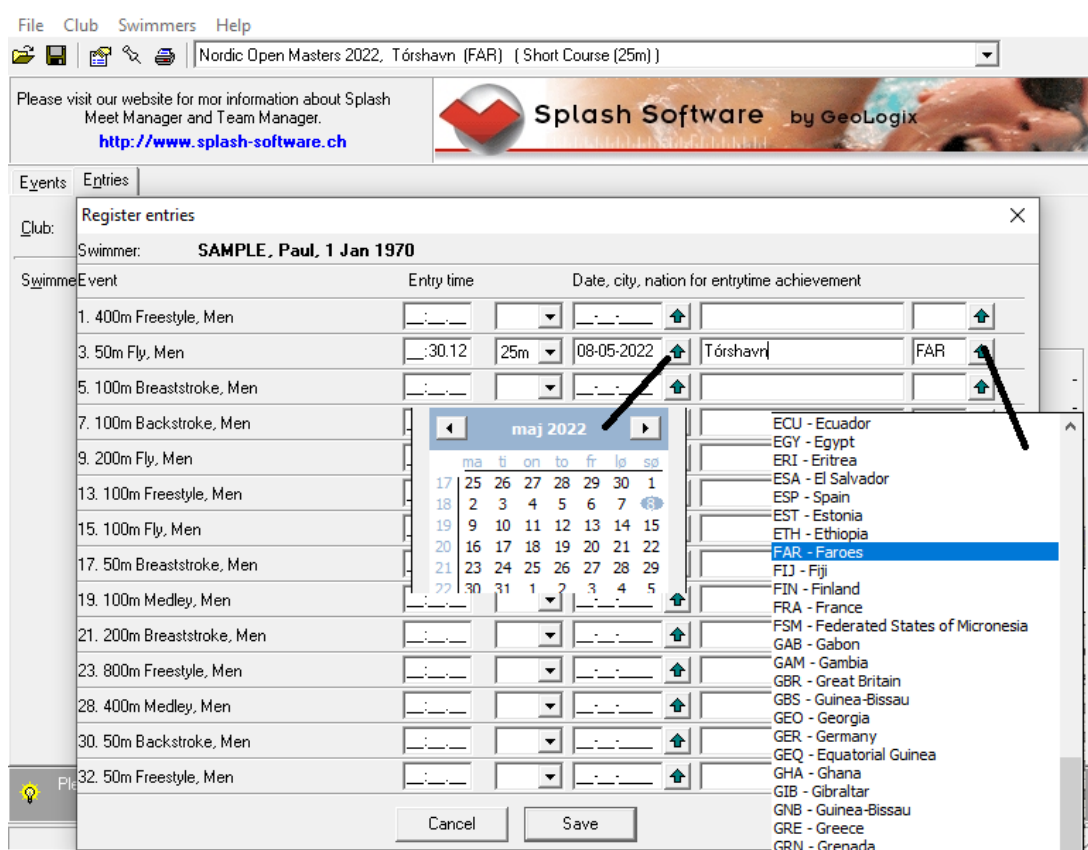
Now, the swimmers will appear in the list



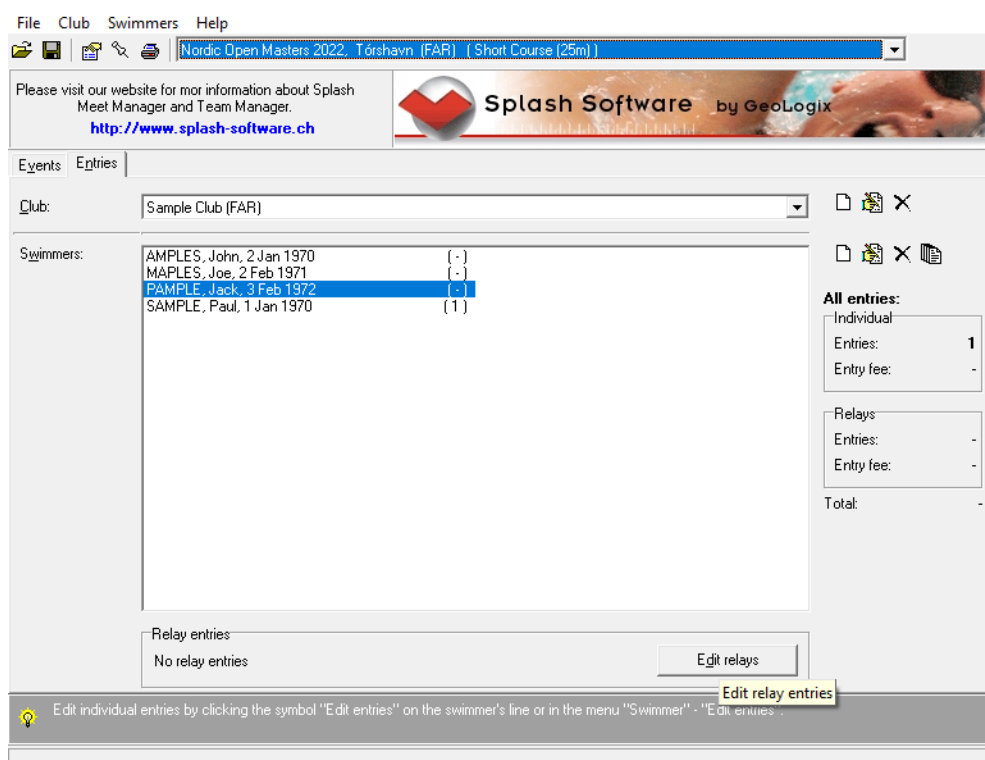
Select a swimmer on the list and click on Edit entries or use (Ctrl+M)



Complete the individual entry form with required information's (Entry Time, Pool length, Date, City and Country of time achieved.)



If recommended add 'Relay' entries by clicking button (Edit relays)



Fill in relay information's

Relay entries dialog box showing fields for Team No., Age from, Race No., Entry time, and Description. The dialog is titled 'Sample Club (FAR) 1 of 1'. A yellow warning bar at the bottom indicates: "You need to enter Define relay swimmers."

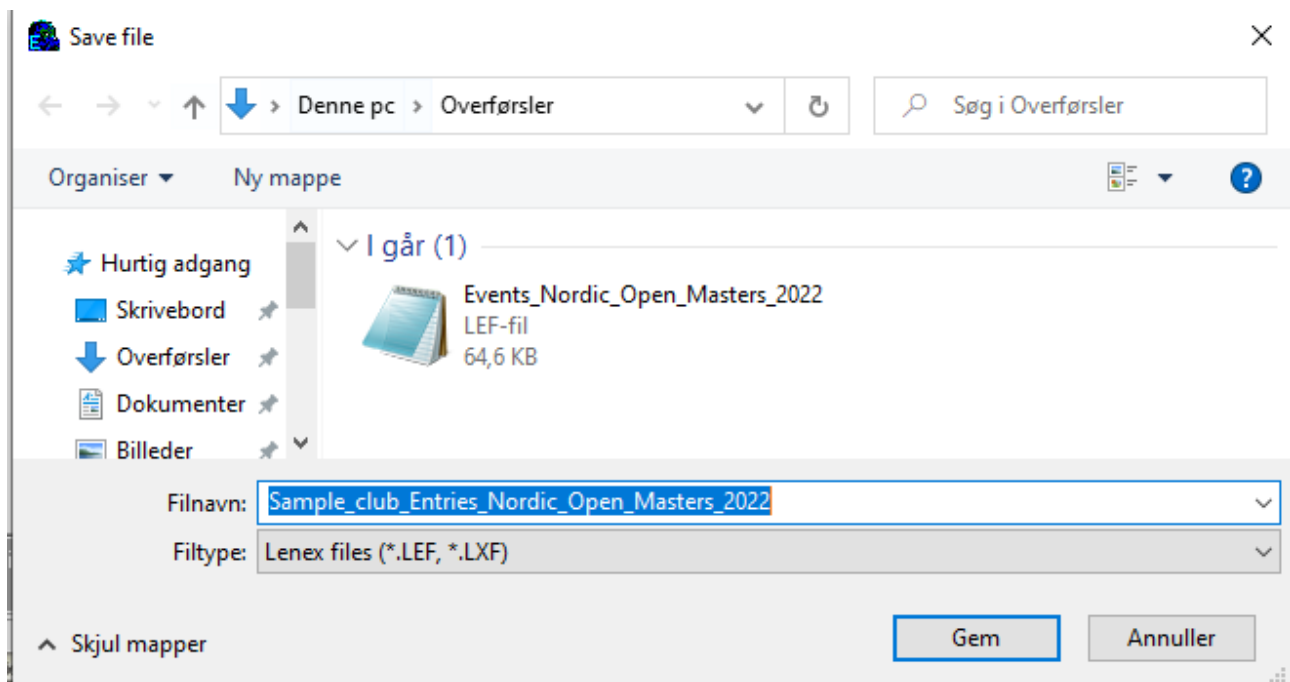
Relay entries dialog box showing fields for Team No., Age from, Race No., Entry time, and Description. The dialog is titled 'Sample Club (FAR) 1 of 1'. A second dialog box, 'Relay swimmers', is shown for '11. 4 x 50m Freestyle, Men' with a list of swimmers: MAPLES, Joe; PAMPLE, Jack; SAMPLE, Paul; and AMPLES, John.

When finish with all individual and relay entries save the file to your hard disk.

Splash Software Meet Manager interface showing the 'Swimmers' list and 'All entries' summary. The 'Swimmers' list includes AMPLES, John, MAPLES, Joe, PAMPLE, Jack, and SAMPLE, Paul. The 'All entries' summary shows 1 Individual and 1 Relay entries. A yellow lightbulb icon is visible at the bottom left.

Press icon save or use (Ctrl+S).

Select a folder on your hard disk, name the file and press Save.



Send your LXF-file to the meet manager by email to nom@ssf.fo